

State of Wyoming Corner Record

(In compliance with the *CORNER PERPETUATION AND FILING ACT*, Wyoming Statutes, 1977, Section 36-11-101, et. seq., and the Rules and Regulations of the Board of Registration for Professional Engineers and Professional Land Surveyors)

Reverse side of this form may be used if more space is needed.

Record of original survey and citation of source of historical information (if corner is lost or obliterated). Description of corner monumentation evidence found and/or monument and accessories established to perpetuate the location of this corner. Sketch of relative location of monument, accessories, and reference points with course and distance to adjacent corner(s) (if determined in this survey). Method and rationale for reestablishment of lost or obliterated corner.

G.L.O. Notes: U.S. Deputy Surveyor, John B. Thomas, September 15, 1870; 40.33 Chains...Set Granite Boulder 16 x 8 x 5 for 1/4 Sec Cor.

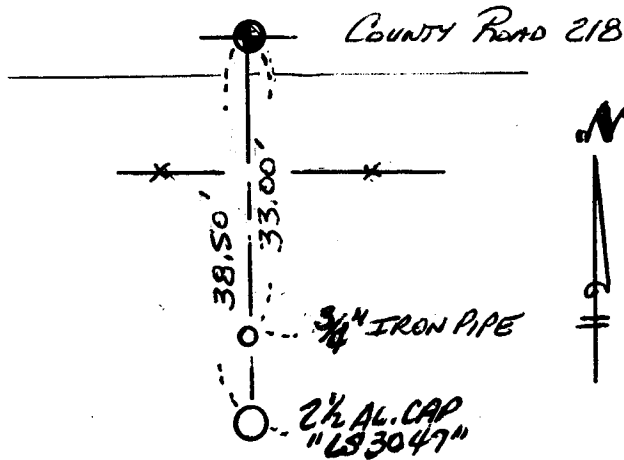
Subsequent Record: Jack K. Woolrich, Wyoming Registered P.E. & L.S. No. 397, field survey performed on January 12, 13, 19 & 20, 1957 and certified on a certificate of surveyor not of record and can be found in the files of Steil Surveying Services, Job No. 92100, indicating a field survey and "Record of Survey for Leroy Manley" performed by me during the month of July, 1992. The Jack K. Woolrich survey indicates "Iron Pipe W.C. 33' South of 1/4 Sec. Cor."

Found: 3/4" Iron Pipe, 33.00' South of the 1/4 Corner to Sections 13 and 24.

Set: No. 5 x 24" rebar with 2" Aluminum Cap, approximately 0.5' below Laramie County Road No. 218, July, 1992.

See back of this sheet for ties to adjacent monuments.

Aluminum Cap Markings



SSS
T15N R67W
S13
1/4
S24
LS 2500

LARAMIE COUNTY CLERK
CHEYENNE, WY.
178476
96 MAR 1 PM 12 14

Sketched Reference Point Ties To Corner

Date of Field Work: 15, Feb., 1996 Office Reference: Job No. 2-1930.95

CROSS INDEX DIAGRAM

1	2	3	4	5	6	7	8	9	10	11	12	13	14	15	16	17	18	19	20	21	22	23	24	25	
A	6	5	4	3	2	1																			
B																									
C	7	8	9	10	11	12																			
D																									
E	18	17	16	15	14	13																			
F																									
G	19	20	21	22	23	24																			
H																									
I	30	29	28	27	26	25																			
J																									
K	31	32	33	34	35	36																			
L																									
M																									
N																									
O																									
P																									
Q																									
R																									
S																									
T																									
U																									
V																									
W																									
X																									
Y																									
Z																									

Firm/Agency, Address
Paul A. Reid, A.V.I.P.C.
2035 Westland Road
Cheyenne, WY 82001
 Telephone Number:
(307)-634-6017

This corner record was prepared by me or under my direction and supervision.
SEAL & SIGNATURE



Corner Name: sk Corner Section: 13 T 15N R 67W; 6TH P.M. Cross-Index No.: N-23

SBRPEPLS/PLSW: March 1994

BOOK 1418

1373

